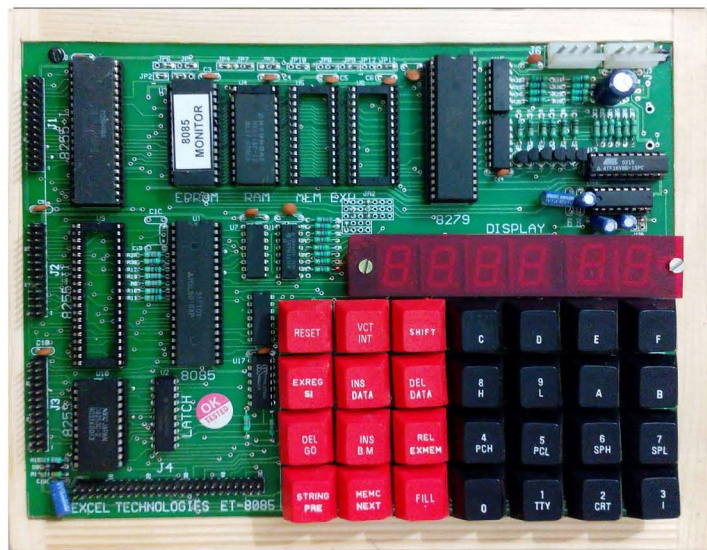




8085 MICROPROCESSOR TRAINING KIT



MODEL : ET-8085AD

(Advance 8085 MICROPROCESSOR TRAINING KIT)

SPECIFICATION:

- 8085 Microprocessor (8 bit) chip, operating at 6.144 MHz crystal frequency.
- 16 K/32 K bytes of EPROM loaded with powerful monitor program.
- 8 K/32 K bytes of RAM available to the user.
- Total on Board memory expansion of 64K bytes using 2732/2764/27128/27256/6264/62256/ with total 4 sockets of 28 pins.
- Memory mapping definable by the user.
- 48 programmable I/O lines provided through 8255.
- Three 16-bit Timers/Counters through 8253.
- RS-232C interface for CRT Terminal with auto baud rate from 75 to 4800 baud.
- 28 keys hexadecimal keyboard and six seven segment displays through 8279
- **EPROM programmer for 27 series.**
- **8 channels of A/D converter using ADC 0809.**
- **One channel of 8-bit D/A using DAC 0800.**
- **1 Relay Output having two NO and NC Contacts.**
- **1 Opto isolated Input.**
- **Battery Back up for RAM.**
- **Assembler/Disassembler.**
- All address, data & control lines are available at 50-pin FRC connector as per STD bus configuration.
- Powerful software commands like Relocate, string, Fill, Insert, Delete, Block Move, Examine & Compare Memory, Examine Register, Insert Data, Single step, Go, Break point in both serial and keyboard mode.
- **Facility for Down/Up loading files from PC.**
- **With Built in Power Supply.**

MODEL : ET-8085

SPECIFICATIONS:

- 8085 Microprocessor (8 bit) chip, operating at 6.144 MHz crystal frequency.
- 16 K /32 K bytes of EPROM loaded with powerful monitor program.
- 8 K/32 K bytes of RAM available to the user.
- Total on Board memory expansion of 64K bytes using 2732/2764/27128/27256/6264/62256/ with total 4 sockets of 28 pins.
- Memory mapping definable by the user.
- 24 programmable I/O lines provided through 8255. (Expandable to 48 lines)
- Three 16-bit Timers/Counters through 8253.
- RS-232C interface for CRT Terminal with auto baud rate from 75 to 4800 baud.
- All address, data & control lines are available at 50-pin FRC connector as per STD bus configuration.
- 28 key hexadecimal keyboard and six seven segment displays through 8279.
- Hex key pad mode & Serial mode
- Powerful software commands like Relocate, string, Fill, Insert, Delete, Block Move, Examine & Compare Memory, Examine Register, Insert Data, Single step, Go, Break point in both serial and keyboard mode.
- **Facility for Down/Up loading files from PC.**
- **With Built in Power Supply.**

INTERFACING MODULES / STUDY CARDS

Various types of interfacing modules and study cards from EXCEL can be hooked to these kit to perform simple experiments in the lab. These modules are very helpful in learning about real life interfacing problems of Microprocessor.

Note : Specifications are subject to change due to our constant efforts for Improvement. Please refer to quotation for final specifications.