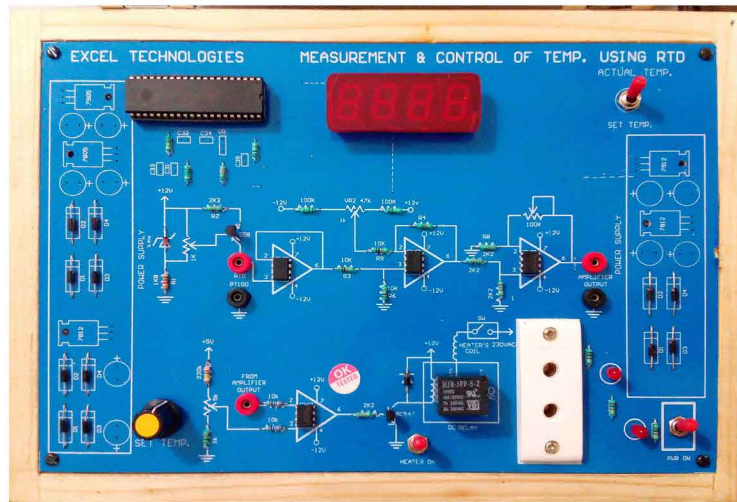




SENSOR & INSTRUMENTATION - V



MODEL : ET-TEMPC

* Temperature Controller Trainer

ET-TEMPC is used to study how to control Temperature using RTD. The kit has onboard 220v relay using which the heater is turned On /OFF to maintain the Temperature.. This kit has been designed keeping students in mind so its very easy to understand and use.

Specification:-

- Supplied with RTD to measure the Temp
- On board 3 ½ digits Digital Meter with toggle switch to view SET Temp & ACTUAL Temp
- On board amplifier Circuit
- On board 2 Pin Socket to connect the heating Rod
- On board relay for Control
- Test points are provided for measuring the voltage
- On board Amplifier Section
- Built in Zero Offset
- ON/OFF switch and LED for power indication.
- Bare board Tested Glass Epoxy SMOBC PCB is used.
- Block Description Screen printed on glassy epoxy PCB
- All interconnections are made using 2mm banana Patch cords
- Supplied with User manual and patch cords
- With built-in power supply
- Enclosed in a wooden/plastic box

* Float Sensor Trainer

ET-FLOAT is used to study Float Sensor .The kit comes with water tank, pump, etc. This kit has been designed keeping students in mind so its very easy to understand and use.

Specification:-

- Provided with Float Sensor

- Variable Float sensor position
- Water tank for filling water
- Pump for pumping water
- Electronic relay for controlling the pump
- ON/OFF switch and LED for power indication.
- Bare board Tested Glass Epoxy SMOBC PCB is used.
- Block Description Screen printed on glassy epoxy PCB
- All interconnections are made using 2mm banana Patch cords
- Supplied with User manual and patch cords
- With built-in power supply
- Enclosed in a wooden/plastic box

* Smoke Sensor Trainer

ET- SMOKE is used to study smoke sensor. This kit has been designed keeping students in mind so its very easy to understand and use.

Specification:-

- On board smoke sensor
- On board buzzer
- ON/OFF switch and LED for power indication.
- Supplied with User manual and patch cords
- With built-in power supply
- Enclosed in a wooden/plastic box

* Humidity Sensor Trainer

ET-HUM is used to study Humidity Sensor. This kit has been designed keeping students in mind so its very easy to understand and use.

Specification:-

- On board humidity sensor
- Test points are provided for measuring the voltage
- On board Digital meter: 3 ½ digits
- On board Amplifier Section
- ON/OFF switch and LED for power indication.
- Bare board Tested Glass Epoxy SMOBC PCB is used.
- Block Description Screen printed on glassy epoxy PCB
- All interconnections are made using 2mm banana Patch cords
- Supplied with User manual and patch cords
- With built-in power supply
- Enclosed in a wooden/plastic box

Note : Specifications are subject to change due to our constant efforts for Improvement. Please refer to quotation for final specifications.