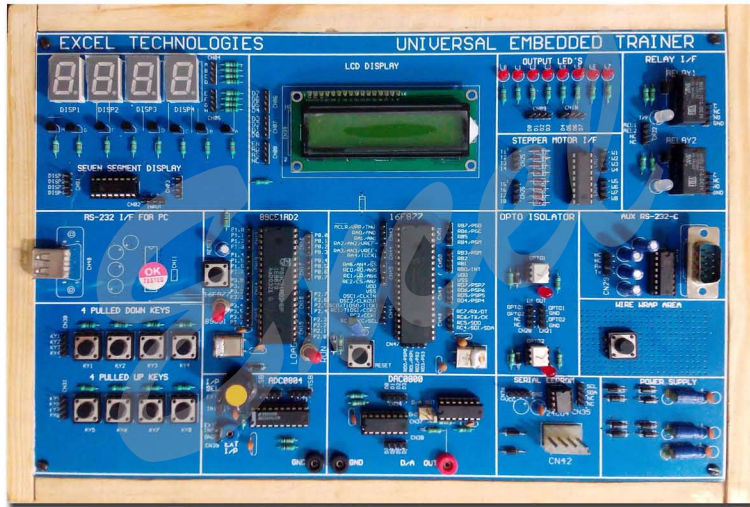




# UNIVERSAL EMBEDDED TRAINER



## MODEL : ET-UET

Universal Embedded Trainer has been designed with the idea of providing a usefull and complete hardware platform to learn about the Atmel's 89CXX Micro controller series and Microchip's PIC16F877A which are one of the most popular controller in 40 pin category.

The system provides on board general purpose hardware like LED Display, LCD Display, Keyboard Matrix, ADC, DAC, Relays, Opto Isolated Input, etc. so that the student can learn about interfacing these with Microcontroller chip.

An RS232 interface is also provided on board. The system interacts with the PC through USB interface.

Since 89C51RD2 and PIC 16F877A both are Flash Microcontrollers, they can be programmed through the PC interface and the programs downloaded can be executed by the system.

The System is provided with the necessary software and USB cabel,etc. The software is provided in a CD and it includes the Data Sheets and other shareware software.The system comes with connecting cables and a User manual which has many solved examples relating to different hardware,etc

## SPECIFICATION:

Universal Embedded Trainer Based on 89C51RD2 and Micro chip's 16F877 based Micro Controller.

- \* Bases on Phillips' 89C51RD2 and Microchip's 16F877 based microcontroller.
- \* On Board USB interface for serial downloading and communications
- \* RS232 serial port for the user Design.
- \* All ports available for use by the programmer
- \* On Board ADC Chip
- \* On Board DAC Chip
- \* On Board 16\*2 LCD Display
- \* On Board seven segment Display
- \* On Board 4 Pulled up Keys
- \* On Board 4 Pulled Down Keys
- \* On Board 8 LED Outputs
- \* On Board Two Relays and Opto Isolated Inputs
- \* On Board Stepper Motor Controller Driver
- \* On Board Serial EEPROM
- \* Built in Power Supply
- \* Enclosed in a wooden Box
- \* Supplied with connecting cables and User Manual

Note : Specifications are subject to change due to our constant efforts for Improvement. Please refer to quotation for final specifications.